



UPPSALA
UNIVERSITET



SciLifeLab

Unsupervised detection of cellular domains from spatial gene expression signatures by spage2vec

Gabriele Partel¹, Carolina Wählby¹

¹Division of Visual Information and Interaction, Department of Information Technology, and SciLifeLab, Uppsala University, Uppsala, Sweden

The ERC logo, featuring a circular pattern of orange dots.

erc

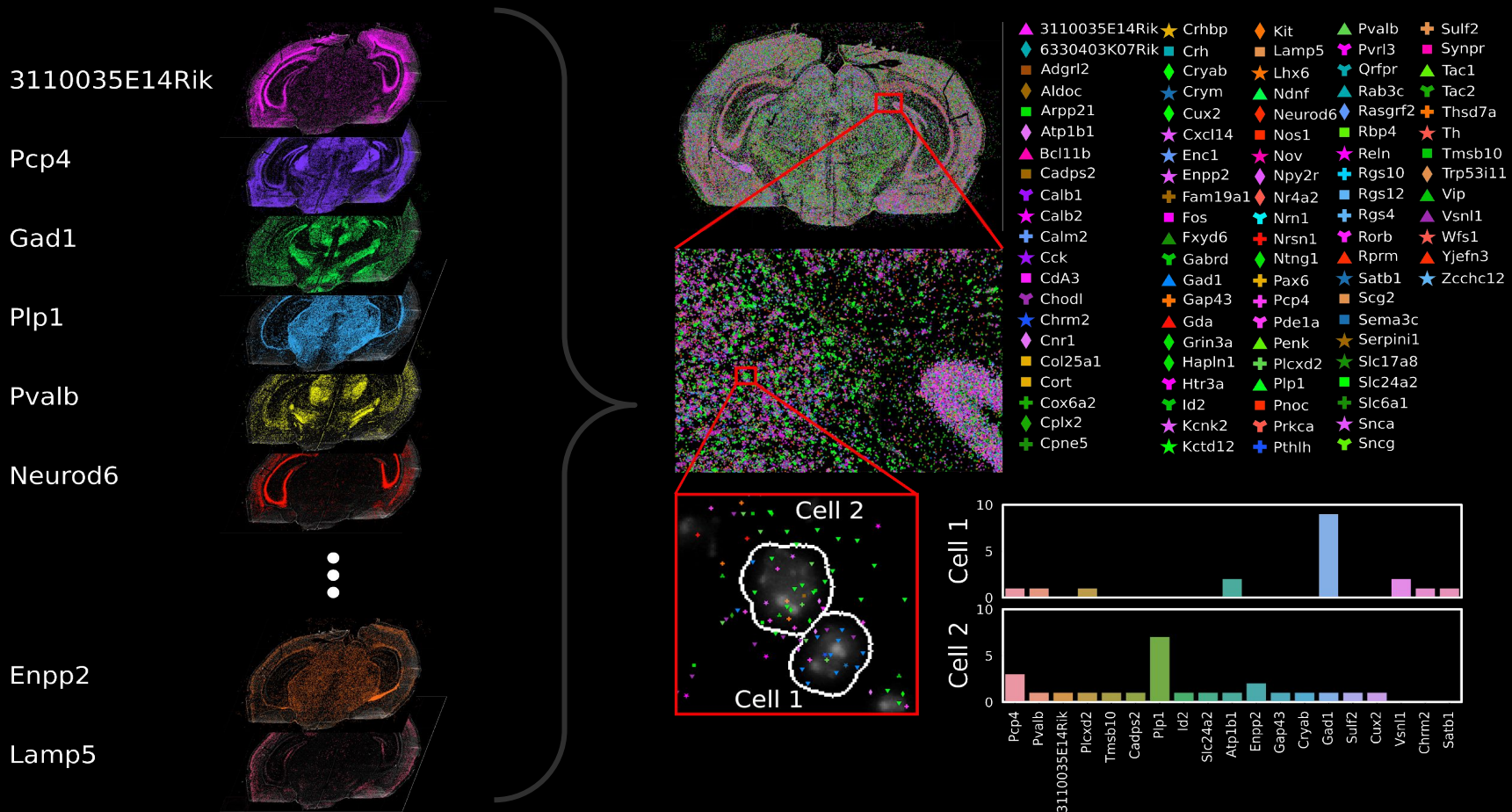


@gapartel

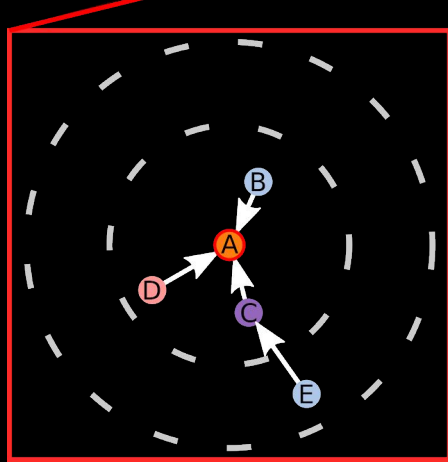
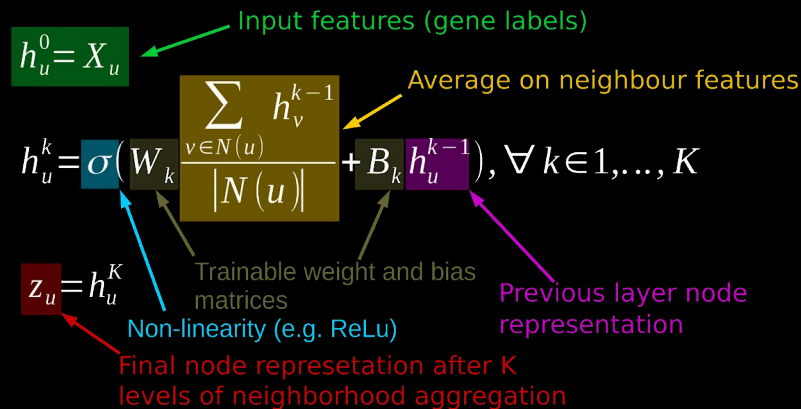
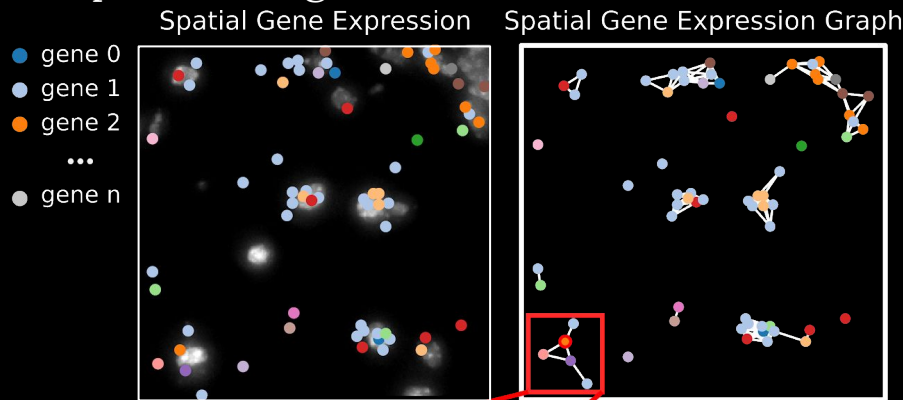


gabriele.partel@it.uu.se

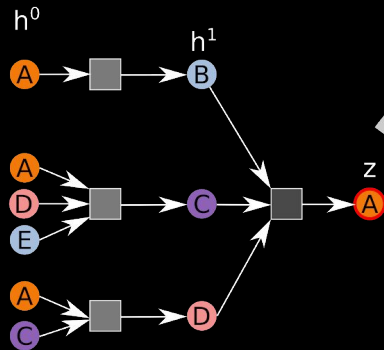
Spatially resolved transcriptomics map the expression of targeted genes in preserved tissue samples



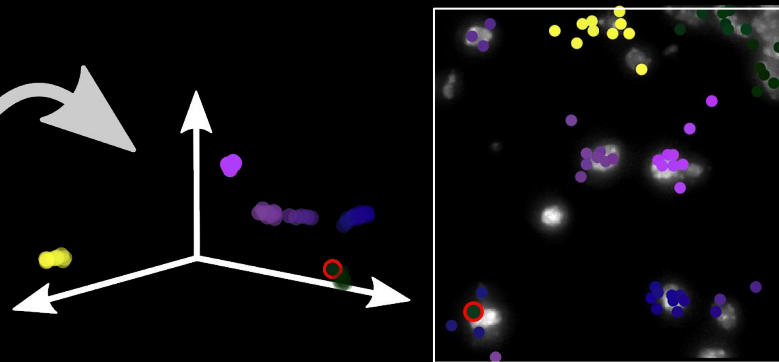
Spage2vec creates an unsupervised concise representation of localized spatial gene expression signatures



Local gene expression aggregation from node's neighborhood

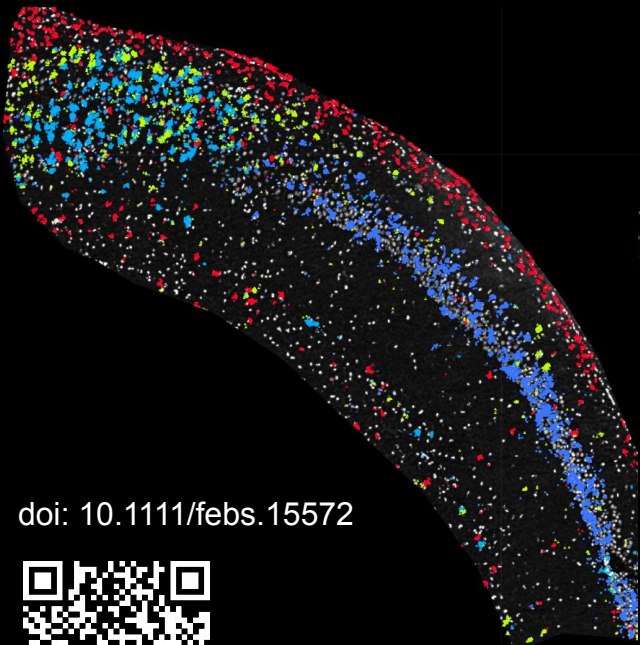


Spage2vec representation of spatial gene expression

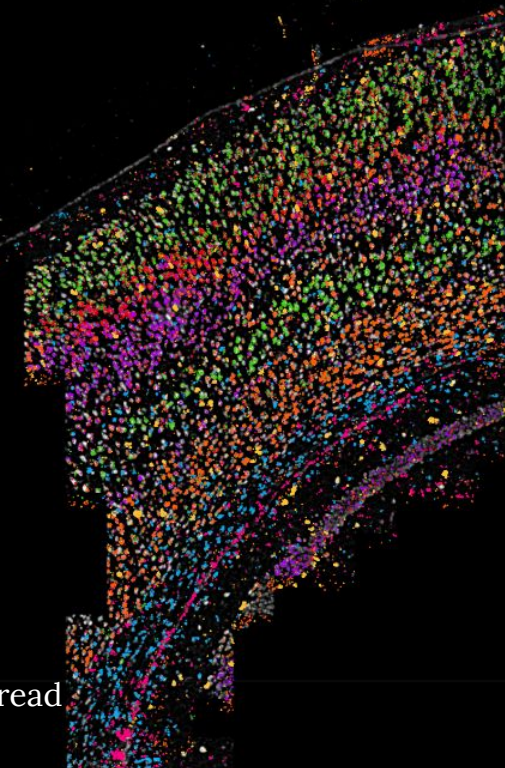


Spa2vec representation of the spatial gene expression can be used to identify cell-type signatures by clustering analysis

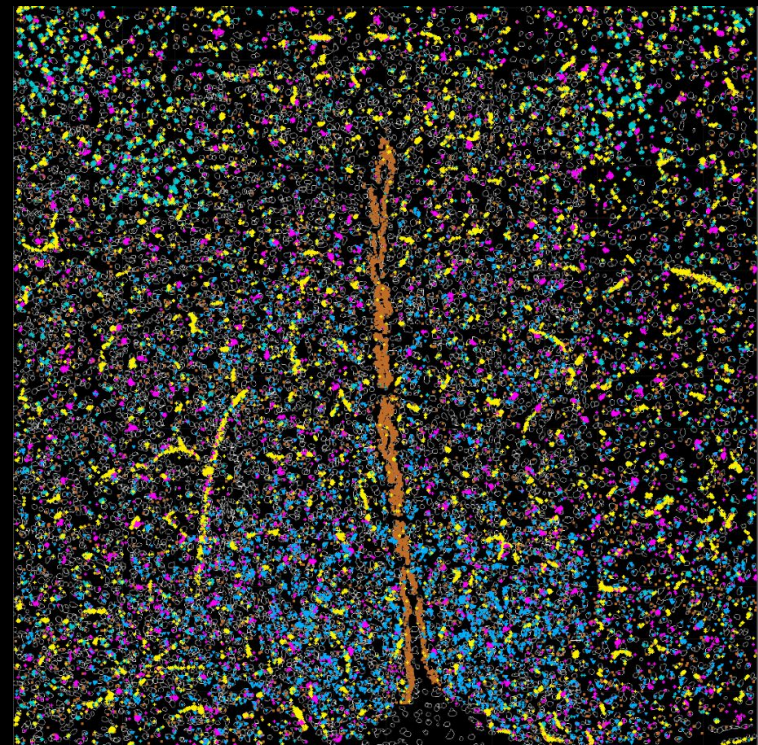
ISS - Qian et al. (2019)



osmFISH - Codeluppi et al. (2018)



MERFISH - Moffitt et al. (2018)



doi: 10.1111/febs.15572



Explore by yourself or read the publication!